



Verastone® and Verastone Plus® are available with recycled content.

**TRENWYTH**

**Verastone®**  
recycled ground face masonry units

**Verastone® Plus**  
recycled filled and polished masonry units

uncompromising design  
and application flexibility.



Both Verastone and Verastone Plus are specially manufactured to provide exceptional performance and design flexibility for Green Building projects. Verastone recycled ground face masonry units are integrally-colored block with one or more faces ground to expose the variegated color of the natural aggregates.

Verastone Plus recycled filled and polished masonry units offer a smooth terrazzo look. After the initial grinding process, as a cementitious grout is added to the pores and interstices of the unit. The filled units are then polished smooth in a multi-stage polishing process to produce an impervious, graffiti resistant surface.

## Verastone® and Verastone® Plus advantages at a glance

Recycled Content	Extracted, processed and manufactured regionally, Verastone and Verastone Plus masonry units contain a significant amount of pre-consumer recycled content that may contribute LEED Green Building Rating Points® to your building.
One-step Installation	Single trade installation of finished load-bearing or non-load-bearing walls saves time and money.
Preserved Beauty	The factory-applied clear satin gloss or water-based sealer further accentuates the natural beauty of the aggregates while providing additional protection from moisture and the elements.
Verastone Plus Advantages	Verastone Plus offers smooth finished surfaces as the pores and interstices of the ground surfaces are filled with a cementitious grout and polished smooth in a multi-stage process. Offering the look of a terrazzo finish, the polished surface of Verastone Plus is the ultimate in cleaning and stain protection. The filled and polished surfaces resist stains and chemicals; paint, marker and graffiti clean off easily.
Durability	Verastone and Verastone Plus feature built-in ductility and durability.
Moisture / Mold Resistant	All Verastone and Verastone Plus units are manufactured with an integral water repellent admixture to repel moisture and prevent mold and efflorescence.
Low Maintenance	The units are virtually maintenance free and will last the lifetime of your building with no refinishing.
Colors, Shapes & Scoring Patterns	A sophisticated color palette and a wide variety of shapes and scoring patterns are available for maximum design flexibility.
Fire Protection	Verastone and Verastone Plus features up to a 4-hour fire rating, depending on the thickness and internal configuration of the block.
Regional Color Options	The aggregates are native to your region allowing your building to blend naturally with your environment.
Sound-Absorbing Option	Verastone recycled ground face masonry units are available in Acousta-Wal® sound-absorbing units.
Over-sized Units	Verastone and Verastone Plus are available in Monumental over-sized units..

**TRENWYTH**

Verastone®  
recycled ground face masonry units

Verastone® Plus  
recycled filled and polished masonry units



architectural masonry units

# Table of Contents

Verastone®  
Verastone® Plus

Specifications . . . . . VS 1

R-Values . . . . . VS 2 – 5

ASTM Reports . . . . . VS 6

Block Characteristics/Fire Ratings . . . . . VS 7

Installation Instructions . . . . . VS 8 – 9

Cleaning Instructions . . . . . VS 10 – 12

Field Coat Application . . . . . VS 13 – 14

Shapes & Sizes Coding System . . . . . VS 15

Shapes & Sizes . . . . . VS 16

Scoring Patterns . . . . . VS 17

Chamfered Edge Coding System . . . . . VS 18

Chamfered Edge Design Recommendations . . . . . VS 19

Bullnose Edge Coding System . . . . . VS 20

Frequently Asked Questions . . . . . VS 21 – 24

Verastone® and Verastone® Plus Colors . . . . . VS 25

This page intentionally left blank

# Verastone and Verastone Plus, Specifications

## PART 1 – GENERAL

### SUBMITTAL

Submit color samples for selection from manufacturer's group A, B, C, D or E. Submit product literature, certifications, test reports and full size sample(s) of each color specified.

### QUALITY ASSURANCE

**Certifications:** Concrete blocks for grinding shall conform to ASTM C90. After the initial grinding process to expose the variegated colors of the natural aggregates, the pores and interstices of Verastone Plus filled and polished units are filled with a cementitious grout and polished smooth in a multi-stage polishing process. Both the ground face and filled and polished surfaces shall have a factory-applied heat-treated acrylic or water-based sealer finish.

All units contain a manufacturer-approved integral water-repellent CMU admixture at the time of manufacture.

Verastone Plus filled and polished units shall conform to the requirements of ASTM C744-08 and all applicable Federal Specifications.

Both Verastone and Verastone Plus contain pre-consumer recycled content. Contact your Trenwyth representative for details.

**Fire Resistance:** Fire rated for up to 4 hours. Define hourly ratings required by NCMA TEK Notes, available at [www.trenwyth.com](http://www.trenwyth.com).

**Field Constructed Mock-ups:** Construct a sample panel, no less than 4' x 4', of units of each color and size to be used in the project.

A full size unit is required to illustrate color and texture for approval. Manufacturer requires a sample panel be installed at the jobsite prior to installation of any Trenwyth product. This panel will represent both the quality of the product and the workmanship to be expected for the project. The panel must be approved by either the owner or architect for the project. Manufacturer will provide 4" units for a 4' by 4' sample panel at no cost for the material (excluding freight to site).

### DELIVERY, STORAGE AND HANDLING

Units shall be delivered to the jobsite on covered banded pallets with cardboard between layers. Store pallets in single stacks on level ground and cover with waterproof covering (e.g., tarpaulins) to protect the blocks from inclement weather. Handle blocks carefully to avoid breakage and damage to the finished surfaces.

### PROJECT/SITE CONDITIONS

**Protection of Work:** Cover walls each day after installation to keep open walls protected and dry. After units are installed they should be protected from damage by other trades performing operations that can stain or otherwise damage the finished surfaces by covering walls with plastic. Corners should be protected from damage after installation by covering them with plywood.

## PART 2 – PRODUCTS

### PRODUCT NAME

Verastone® recycled ground face masonry units

Verastone® Plus recycled filled and polished masonry units

### MANUFACTURER

Anchor Concrete Products (800) 233-1924  
One Connelly Road • Emigsville, PA 17318

Northfield Block Company (800) 358-3003  
3400 E. Bungalow Road, Morris, IL 60450

### RELATED MATERIALS

Colored matching or contrasting mortar is available from manufacturer. Consult NCMA TEK Notes, available at [www.trenwyth.com](http://www.trenwyth.com), for mortar type and specifications. For all exterior mortar, use matching manufacturer-approved water repellent mortar admixture following manufacturer's instructions. Consult manufacturer for recommendations.

### SIZES AND SHAPES

Surfaces are manufactured to provide finished dimensions of 7-5/8" x 15-5/8" ± 1/8". Bed depth dimensions for single face units are 3-9/16", 5-9/16", 7-9/16", 11-9/16" ± 1/8". Two face units are 3-1/2", 5-1/2", 7-1/2", 11-1/2", ± 1/8". Nominal 2", 4", 6", 8", 10" and 12" standard block thickness are available as well as all standard block shapes. High-strength units for special structural requirements, over-sized units, and metric shapes and sizes are also available.

### MASONRY CLEANERS

Carefully following manufacturer's instructions, use Burnished Custom Masonry Cleaner by PROSOCO (dilute 1 part to 3 parts clean water). Available from manufacturer. **Do not powerwash.**

**CAUTION!** Never use Muriatic Acid solution or any cleaner with an acid base on units.

## PART 3 – EXECUTION

### LAYING MASONRY WALLS

Draw blocks from more than one pallet at a time during installation. All exterior mortar shall include manufacturer-approved matching water-repellent additive added to each batch in the appropriate dosage rates for mortar type (M, S or N) per manufacturer's instructions. Refer to NCMA TEK Notes, available at [www.trenwyth.com](http://www.trenwyth.com), for Hot and Cold weather construction practices.

Lay units using the best concrete masonry practices. Install only quality units; reject all defective units as defined by ASTM C90. Lay blocks with the faces level, plumb and true to the line strung horizontally at the ground or filled and polished face. Units shall have uniform, 3/8"-wide joints both horizontally and vertically on the finished side of the wall. Tool joints neatly after they are finger-hard to make them straight and uniform. Size and place cut pieces appropriately to maintain consistency and bond. Complete masonry construction using procedures and workmanship consistent with the best masonry practices.

### INSTALLATION

**Lighting:** Provide adequate lighting for masonry work by placing all lighting at a reasonable distance from the wall for even illumination. Do not use trough lighting.

**Cutting:** Make all unit cuts, including those for bonding, holes, boxes, etc., with motor-driven masonry saws, using either an abrasive or diamond blade. Cut neatly and locate for best appearance.

### MORTAR BEDDING AND JOINTING

1. Lay units with full mortar coverage on head and bed joints taking care not to block cores to be grouted or filled with masonry insulation.
2. Tool all mortar joints when thumbprint hard into a concave configuration.
3. Care should be taken to remove mortar from the face of masonry units before it sets.
4. Tuckpoint the joints of scored units for proper appearance. All exterior scored units must be tuckpointed to prevent water penetration. **NO RAKE JOINTS.**

### FLASHING OF MASONRY WORK

Install flashing at locations shown in the plans and in strict accordance with the details and the best masonry flashing practices.

### WEEP HOLES AND VENTS

Install weep holes and vents at proper intervals at courses above grade and at any water stops over windows, doors and beams. Consult NCMA TEK Notes, available at [www.trenwyth.com](http://www.trenwyth.com), for proper flashing and drawings.

### INSPECTION

The faces shall conform to the requirements of ASTM C90 when viewed from a distance of twenty (20) feet at right angles to the wall with normal lighting.

### CLEANING

Keep walls clean daily during installation using brushes, rags and the burlap squares supplied on the pallets. Do not allow excess mortar lumps or smears to harden on the finished surfaces. Harsh cleaning methods after walls have been erected will mar the surface of the blocks.

### FINAL CLEANDOWN

Clean the completed walls with PROSOCO Burnished Custom Masonry Cleaner (dilute 1 part to 3 parts clean water), strictly following the manufacturer's instructions – including thorough rinsing. Do not use acid or abrasives on the finished surfaces. Failure to strictly follow manufacturer's instructions can result in permanent damage to the finished faces. Do not apply Burnished Custom Masonry Cleaner with pressure spray above 50 psi. **Do not powerwash.**

### FIELD COAT APPLICATION

For completely finished walls, a finish coat of TRENDCOAT® Acrylic (minimum 20% solids content) or TRENDCOAT® WB (water-base) is recommended. Apply to walls after cleandown and when the walls are dry. Apply the acrylic evenly to cover the entire surface without forming drips or runs. For maximum coverage and best appearance, apply TRENDCOAT Acrylic or TRENDCOAT WB with airless spray equipment. Consult manufacturer for further information. This clear, high-solids acrylic, provides moisture resistance and helps to cover any scuffs or scratches that may occur during handling and/or installation. TRENDCOAT also offers excellent graffiti resistance for Verastone Plus filled and polished units.

### MAINTENANCE

Properly installed and cleaned, units need virtually no maintenance other than routine cleaning (i.e. Pinesol or Fantastik). Graffiti, paint or dye stains may need special cleaning methods and products such as Trenwyth Graffiti Wizard® environmentally friendly cleaner. Contact manufacturer for specific cleaning recommendations.

### INSTALLATION RECOMMENDATIONS

Consult NCMA TEK Notes, available at [www.trenwyth.com](http://www.trenwyth.com), for proper installation of concrete masonry units.

This page intentionally left blank

R-values of concrete masonry walls are correlated to concrete density, since thermal conductivity of concrete increases with increasing density. The following tables list a range of R-values for each density. Contact your sales representative.

**Table 2 — R-Values For 6 in. (152 mm) Concrete Masonry Walls, hr . ft<sup>2</sup>°F/Btu<sup>3</sup>**

Construction	Density of concrete pcf	Cores empty		Cores filled with:							
				Loose-fill insulation				Polyurethane foamed insulation		Solid grouted	
				Perlite		Vermiculite		range	mid	range	mid
				range	mid	range	mid				
Exposed block, both sides	85	2.2-2.5	2.4	4.8-6.1	5.3	4.5-5.6	5.0	5.2-7.0	5.9	1.6-1.8	1.7
	95	2.1-2.4	2.2	4.1-5.4	4.6	3.9-5.0	4.3	4.4-6.1	5.0	1.5-1.7	1.6
	105	2.0-2.2	2.1	3.5-4.8	4.0	3.3-4.5	3.8	3.7-5.2	4.3	1.4-1.6	1.5
	115	1.8-2.1	2.0	3.0-4.2	3.4	2.9-4.0	3.3	3.1-4.5	3.6	1.4-1.5	1.4
	125	1.7-2.0	1.8	2.5-3.7	3.0	2.5-3.5	2.9	2.6-3.9	3.1	1.3-1.5	1.4
	135	1.6-1.9	1.7	2.2-3.2	2.6	2.2-3.1	2.5	2.2-3.4	2.7	1.3-1.4	1.3

**Table 3 — R-Values For 8 in. (203 mm) Concrete Masonry Walls, hr . ft<sup>2</sup>°F/Btu<sup>3</sup>**

Construction	Density of concrete pcf	Cores empty		Cores filled with:									
				Loose-fill insulation				Polyurethane foamed insulation		Solid grouted			
				Perlite		Vermiculite		range	mid	range	mid	range	mid
				range	mid	range	mid						
Exposed block, both sides	85	2.4-2.7	2.5	6.3-8.2	7.1	5.9-7.5	6.6	6.9-9.4	8.0	1.9-2.1	2.0		
	95	2.3-2.6	2.4	5.3-7.2	6.1	5.0-6.7	5.7	5.8-8.1	6.7	1.7-2.0	1.8		
	105	2.1-2.4	2.2	4.5-6.3	5.2	4.3-5.9	4.9	4.8-7.0	5.6	1.6-1.9	1.7		
	115	2.0-2.3	2.1	3.8-5.5	4.4	3.7-5.2	4.3	4.0-6.0	4.7	1.5-1.8	1.6		
	125	1.9-2.2	2.0	3.2-4.8	3.8	3.1-4.6	3.7	3.3-5.1	4.0	1.5-1.7	1.5		
	135	1.7-2.1	1.9	2.7-4.2	3.3	2.7-4.0	3.2	2.8-4.4	3.4	1.4-1.6	1.5		

**Table 4 — R-Values For 10 in. (254 mm) Concrete Masonry Walls, hr . ft<sup>2</sup>°F/Btu<sup>a</sup>**

Construction	Density of concrete pcf	Cores empty range mid		Cores filled with:							
				Loose-fill insulation				Polyurethane foamed insulation		Solid grouted	
				Perlite		Vermiculite		range	mid	range	mid
				range	mid	range	mid				
Exposed block, both sides	85	2.5-2.9	2.7	7.5-9.9	8.5	7.0-9.1	7.9	8.2-11.3	9.5	2.1-2.4	2.2
	95	2.4-2.7	2.5	6.3-8.7	7.2	6.0-8.0	6.8	6.7-9.7	7.9	1.9-2.2	2.0
	105	2.2-2.5	2.3	5.2-7.5	6.1	5.0-7.0	5.8	5.5-8.2	6.6	1.8-2.1	1.9
	115	2.1-2.4	2.2	4.4-6.5	5.2	4.2-6.2	5.0	4.6-7.0	5.5	1.7-2.0	1.8
	125	1.9-2.3	2.1	3.7-5.6	4.4	3.6-5.4	4.3	3.8-6.0	4.6	1.6-1.9	1.7
	135	1.8-2.1	2.0	3.1-4.9	3.7	3.0-4.7	3.6	3.2-5.1	3.9	1.5-1.8	1.6

**Table 5 — R-Values For 12 in. (305 mm) Concrete Masonry Walls, hr . ft<sup>2</sup>°F/Btu<sup>a</sup>**

Construction	Density of concrete pcf	Cores empty range mid		Cores filled with:							
				Loose-fill insulation				Polyurethane foamed insulation		Solid grouted	
				Perlite		Vermiculite		range	mid	range	mid
				range	mid	range	mid				
Exposed block, both sides	85	2.6-3.0	2.8	9.1-12.1	10.3	8.5-11.0	9.6	10.0-13.8	11.5	2.3-2.6	2.4
	95	2.4-2.8	2.6	7.6-10.5	8.8	7.2-9.7	8.2	8.2-11.8	9.6	2.1-2.4	2.3
	105	2.3-2.6	2.4	6.3-9.1	7.4	6.0-8.5	7.0	6.7-10.0	8.0	2.0-2.3	2.1
	115	2.1-2.5	2.3	5.2-7.9	6.2	5.1-7.4	6.0	5.5-8.5	6.6	1.9-2.2	2.0
	125	2.0-2.3	2.2	4.4-6.8	5.3	4.2-6.5	5.1	4.5-7.2	5.5	1.8-2.0	1.9
	135	1.9-2.2	2.0	3.6-5.8	4.4	3.6-5.6	4.3	3.7-6.1	4.6	1.7-1.9	1.8

Information based on data published by the National Concrete Masonry Association. See NCMA TEK Note 6-2A, available at [www.trenwyth.com](http://www.trenwyth.com).

TRENWYTH®

architectural masonry units

R-Values  
Verastone®  
Verastone® Plus

Additional r-values can be achieved with factory-installed expanded polystyrene, such as Korfil or ICON inserts.



**Korfil® Block Insulation inserts** are individually molded expanded polystyrene inserts. Installed at your Trenwyth manufacturing facility, Korfil insulation inserts are designed to fit standard two-core masonry units. Korfil inserts are available in 6", 8", 10" and 12" widths.



**ICON® Universal Concrete Block Insulation Inserts** are molded from expandable polystyrene. Pre-fit at your Trenwyth manufacturing facility, ICON inserts are designed to compress and fit the core of all masonry units and significantly improve cmu thermal efficiency.

### R-Values

Both Korfil and ICON inserts offer your building the following benefits:

- One-step installation of insulated masonry block saves time and money.
- R-value unaffected by moisture or aging
- Insulated block offers up to a 4-hour fire rating
- Improves dew point and sound transmission resistance
- Offers space for easy installation of utilities within wall
- Flame retardant polystyrene
- Use with single-wythe and cavity wall construction
- No maintenance required
- Available in 6", 8", 10" and 12" widths.

Caution: Expanded Korfil polystyrene should not be exposed to temperatures exceeding 184°F.

Applicable Standards:

- ASTM C578 Specification for Rigid Cellular Polystyrene Thermal Insulation
- ASTM C90 Standard Specification for Loadbearing Concrete Masonry Units

6" Two-Core Masonry Unit				
Density of Block - lbs/ft <sup>3</sup>	Cores Empty		Cores Insulated	
	R <sup>i</sup>	U	R <sup>i</sup>	U
80	2.64	.38	6.45	.16
95	2.42	.41	5.39	.19
105	2.29	.44	4.76	.21
115	2.17	.46	4.21	.24
125	2.05	.49	3.69	.27
135	1.95	.51	3.25	.31

12" Two-Core Masonry Unit				
Density of Block - lbs/ft <sup>3</sup>	Cores Empty		Cores Insulated	
	R <sup>i</sup>	U	R <sup>i</sup>	U
80	3.12	.32	9.38	.11
95	2.83	.35	8.09	.12
105	2.66	.38	7.27	.14
115	2.52	.40	6.51	.15
125	2.38	.42	5.78	.17
135	2.26	.44	5.11	.20

8" Two-Core Masonry Unit				
Density of Block - lbs/ft <sup>3</sup>	Cores Empty		Cores Insulated	
	R <sup>i</sup>	U	R <sup>i</sup>	U
80	2.86	.35	7.74	.13
95	2.61	.38	6.55	.15
105	2.46	.41	5.83	.17
115	2.33	.43	5.17	.19
125	2.21	.45	4.56	.22
135	2.10	.48	4.01	.25

12" Cavity Wall, 4" Outer Wythe, 3/4 Air Space, 8" Two-Core Block				
Density of Block - lbs/ft <sup>3</sup>	Cores Empty		Cores Insulated	
	R <sup>i</sup>	U	R <sup>i</sup>	U
80	4.26	.23	9.14	.11
95	4.01	.25	7.95	.13
105	3.86	.26	7.23	.14
115	3.73	.27	6.57	.15
125	3.61	.28	5.96	.17
135	3.50	.29	5.41	.28

10" Two-Core Masonry Unit				
Density of Block - lbs/ft <sup>3</sup>	Cores Empty		Cores Insulated	
	R <sup>i</sup>	U	R <sup>i</sup>	U
80	3.00	.33	8.52	.12
95	2.73	.37	7.25	.14
105	2.57	.39	6.48	.15
115	2.43	.41	5.76	.17
125	2.31	.43	5.09	.20
135	2.19	.46	4.48	.22

The r-values and u-values are based on information provided by insert manufacturer.

NOVA publications.

For more information, contact your Trenwyth representative or visit [www.cbisinc.com](http://www.cbisinc.com).

ASTM C90 specifies the following tests for load-bearing concrete masonry units for VERASTONE and VERASTONE PLUS recycled ground face masonry units		
Compressive Strength and Moisture Absorbancy	A test to ensure that blocks meet strength and moisture requirements, and are free of cracks and other defects.	<b>Complies</b>
ASTM C1262 specifies the following tests for VERASTONE and VERASTONE PLUS recycled masonry units		
Freeze/Thaw Test	A test to ensure that the finished facing does not crack or craze when exposed repeatedly to freeze thaw cycles	<b>Complies</b>
ASTM C744 specifies the following tests for VERASTONE PLUS recycled filled and polished ground face masonry units		
Cracking and Crazing	A test to ensure that the units are free from cracking and/or crazing.	<b>Complies</b>
Adhesion	A test to determine the adhesion of the finished facing to the block substrate.	<b>Complies</b>
Abrasion	A test to measure the abrasion resistance of the finished facing.	<b>Complies</b>
Color Change	A test by accelerated weathering apparatus to measure change.	<b>Complies</b>

Fire resistance ratings can be calculated using a method that multiplies the percent of solid material in the concrete masonry unit by the actual thickness (in inches) of the blocks to determine the hourly rating for the type of aggregate used. Contact your Trenwyth representative for specific fire ratings.

**FIRE RESISTANCE RATINGS/MINIMUM REQUIRED EQUIVALENT INCHES**

Aggregate Type in The Concrete Masonry Unit	Fire Resistance						
	0.5 Hr.	0.75 Hr.	1 Hr.	1.5 Hr.	2 Hr.	3 Hr.	4 Hr.
Calcareous or siliceous gravel	2.0 in.	2.4 in.	2.8 in.	3.6 in.	4.2 in.	5.3 in.	6.2 in.
Limestone, cinders or slag	1.9 in.	2.3 in.	2.7 in.	3.4 in.	4.0 in.	5.0 in.	5.9 in.
Expanded clay, shale or slate	1.8 in.	2.2 in.	2.6 in.	3.3 in.	3.6 in.	4.4 in.	5.1 in.
Expanded slag or pumice	1.5 in.	1.9 in.	2.1 in.	2.7 in.	3.2 in.	4.0 in.	4.7 in.

Calculating "Equivalent Thickness" is simply determining what the block thickness would be if the same amount of material contained in a hollow unit were re-molded without core holes.

**EQUIVALENT THICKNESS OF CONCRETE MASONRY UNITS (IN INCHES)**

Nominal Width (Inches)			
	Based on Typical Hollow Units (1)	Based on Percent Solid	
		(75% - semi-solid)	(100% - solid)
4	2.68 (73.8%)	2.72	3.625
6	3.09 (55.0%)	4.22	5.625
8	4.04 (53.0%)	5.72	7.625
10	4.98 (51.7%)	7.22	9.625
12	5.77 (49.6%)	8.72	11.625

**CALCULATING ESTIMATED FIRE RESISTANCE EXAMPLE**

An 8" hollow masonry wall is constructed of expanded slag units reported to be 53%\* solid. What is the estimated fire resistance of the wall (modular units)?

**Equivalent Thickness = % solid x depth**  
**Example: .53 x 7.625 in. = 4.04 inches**

**From Table: 3 hr. Fire Resistance requires 4.0 inches**

\*Percentage solid can be calculated from net area or net volume as determined by ASTM C140 "Methods of Testing Concrete Masonry Units".

(1) Information based on data published by the National Concrete Masonry Association in NCMA TEK 7-1A, available at [www.trenwyth.com](http://www.trenwyth.com).



architectural masonry units

# Installation

## Verastone®

## Verastone® Plus

### IMPORTANT! Before You Begin

Manufacturer requires that you order a full size unit to illustrate color and texture for approval.

Manufacturer also requires a sample panel be installed at the jobsite prior to installation of any Trenwyth product. This panel will represent the quality, color and texture of the product and the workmanship to be expected for the project. Either the owner or the project architect must approve the panel. Failure to produce a sample panel may result in loss of warranty. Manufacturer will provide 4" units for a 4' x 4' sample panel at no cost for the material (excluding freight to site).

### Delivery, Storage and Handling

Verastone and Verastone Plus masonry units shall be delivered to the jobsite on covered banded pallets with cardboard between the layers. Store pallets in single stacks on level ground and cover with waterproof covering (e.g., tarpaulins) to protect the blocks from inclement weather. **Handle blocks carefully to avoid breakage and damage to the finished surface.**

### Project Site Conditions

**Protection of Work:** Cover walls, including open tops, each day after installation to keep open walls protected and dry. After units are installed, they should be protected from damage by other trades performing operations that can stain or otherwise damage the finished surfaces by covering walls with plastic. Corners should be protected from damage after installation by covering them with plywood.

Do not, under any circumstance, install a damaged unit that does not conform to the requirements of ASTM C90. If units have been damaged during transit, contact manufacturer immediately.

### Laying Masonry Walls

Draw blocks from more than one pallet at a time during installation. All exterior mortar shall include manufacturer-approved matching water repellent additive added to each batch in the appropriate dosage rates for mortar type (M, S or N) per manufacturer's instructions. Refer to NCMA TEK Notes, available at [www.trenwyth.com](http://www.trenwyth.com), for Hot and Cold weather construction practices.

Lay units using the best concrete masonry practices. Install only quality units; reject all defective units as defined by ASTM C90. Lay blocks with the faces level, plumb and true to the line strung horizontally at the ground face. Units shall have uniform, 3/8"-wide joints both horizontally and vertically on the finished side of the wall. Tool joints neatly after they are finger-hard to make them straight and uniform. Size and place cut pieces appropriately to maintain consistency and bond. Complete masonry construction using procedures and workmanship consistent with the best masonry practices.

**Lighting:** Provide adequate lighting for masonry work by placing all lighting at a reasonable distance from the wall for even illumination. Do not use trough lighting.

**Cutting:** Make all unit cuts, including those for bonding, holes, boxes, etc., with motor driven masonry saws, using either an abrasive or diamond blade. Cut neatly and locate for best appearance.

### Mortar Bedding and Jointing:

1. Lay units with full mortar coverage on head and bed joints taking care not to block cores to be grouted or filled with masonry insulation.
2. Tool all mortar joints when thumbprint hard into a concave configuration.
3. Care should be taken to remove mortar from the face of masonry units before it sets.
4. Tuckpoint the joints of scored units for proper appearance. All exterior scored units must be tuckpointed to prevent water penetration. **NO RAKE JOINTS.**

### Flashing of Masonry Work

Install flashing at locations shown in the plans and in strict accordance with the details and the best masonry flashing practices.

### Weep Holes and Vents

Install weep holes and vents at proper intervals at courses above grade and at any water stops over windows, doors and beams. Consult NCMA TEK Notes, available at [www.trenwyth.com](http://www.trenwyth.com), for proper flashing and drawings.



TRENWYTH®

architectural masonry units

# Installation

## Verastone®

## Verastone® Plus

### Inspection

The ground faces shall conform to the requirements of ASTM C90 when viewed from a distance of twenty (20) feet at right angles to the wall with normal lighting.

### Installation Recommendations

- Consult NCMA TEK Notes, available at [www.trenwyth.com](http://www.trenwyth.com), for proper installation of concrete masonry units.
- A complementary or matching mortar color is recommended when using Verastone and Verastone Plus units. Call 800-233-1924 and ask to receive a Trenwyth Mortar Kit.

### Limitations

- The Verastone and Verastone Plus facing is not intended for use as an impervious surface.
- Acid solutions/HCL acid-based cleaners should not be used as a cleaning agent or come in direct contact with the facing.
- Verastone and Verastone Plus facings should not be continuously exposed to temperatures above 250° F.



architectural masonry units

Cleaning  
Verastone®  
Verastone® Plus

**Walls must be cleaned on a daily basis as block laying proceeds.**

Masonry surfaces clean most effectively if the cleaning is done within 14-28 days after masonry installation. Mortar and grout smears that remain on the surface for a longer time result in a more difficult cleandown and may cause undesirable results.

Final cleandown of masonry surfaces should be completed before installation of windows, doors, hardware, light fixtures, roofing materials and any other non-masonry item that may be damaged by the cleaning product. If such fixtures have been installed, they must be protected before the cleaner is applied. All caulking and sealant materials should be in place and thoroughly cured before cleaning begins.

Protect all surrounding metal and non-masonry materials, painted surfaces and plant life from contact with the cleaner, residue or fumes.

**Masonry Cleaners**

Use Burnished Custom Masonry Cleaner by PROSOCO following manufacturer's instructions (dilute one part to 3 parts clean water). Available from manufacturer. **Do not powerwash.**

**CAUTION!** Never use muriatic acid on units.

Prior to overall application, always test the cleaner (minimum 4' x 4' area) to ensure suitability and desired results. Test each type of masonry and each type of stain. Allow test area to dry for 3 – 7 days before inspection and approval by the project architect or building owner. Clean test areas according to the application below and always make the test panel available throughout the cleaning project.

- Always pour cold water into an empty bucket first before carefully adding detergent.
- Never use hot water.
- Handle in polyethylene or rubber buckets only.
- Acidic materials and fumes will attack metal.

**Exterior Test Application**

The following cleaning procedure is recommended unless otherwise indicated during testing:

1. Thoroughly saturate a large portion of the masonry surface with clean water.
2. Using a densely-packed, soft-fibered masonry washing brush or low-pressure spray (50 psi maximum), apply diluted solution freely. (Do not apply Burnished Custom Masonry Cleaner with pressure spray above 50 psi. Such an application will drive the chemicals deep into the surfaces making it more difficult to rinse completely.)
3. Depending on the absorption rate of masonry and drying conditions, allow cleaning solution to remain on the wall for approximately five (5) minutes. Do not allow cleaner to dry into the masonry because it may leave a residue and cause staining.

**General**

- Keep walls clean by using brushes or rags and the burlap squares supplied on the Verastone and Verastone Plus pallets.
- Do not allow excess mortar lumps or smears to harden on the finished surfaces.
- Remove green mortar with burlap or a dry cloth.
- Wipe masonry blocks clean with burlap (provided with every other cube) as the blocks are laid each day.
- Protect stored materials and the wall prior to completion to prevent excessive water entry and external soiling.
- Protect the exposed portions of metal fixtures. (Harsh cleaning methods after walls have been erected may mar the surface of the blocks.)
- Protect adjacent masonry and floor area by saturating with water and flushing away any cleaning solution before it dries.

## Materials

- Two plastic or hard rubber buckets
- Rubber gloves
- Soft fiber masonry brushes (or whitewash brushes)
- Wooden, plastic or other soft, non-staining scraping device
- Supply of “clean” wipers, such as lint-free cloths or paper towels
- Clean water
- Burnished Custom Masonry Cleaner (dilute one part to 3 parts of clean water). Do not apply the Burnished Custom Masonry Cleaner with pressure spray above 50 psi. It will cause efflorescence.

### **DO NOT USE ACID OR CLEANER WITH HCL BASE.**

## Cleaning Procedure 1

1. Brush clean water liberally on the surface area to be cleaned. Brush approximately one square yard at a time.
2. It is important that the masonry wall be kept wet at all times. Do not use dirty water.
3. Apply cleaning solution brushing in a circular motion to remove any unwanted mortar smears.
4. Remove excess lumps of mortar with the soft (wood or plastic) scraping device and re-apply cleaning solution.
5. Allow cleaning solution to remain on the surface for two or three minutes then wash off with liberal amounts of fresh, clean water.
6. Wipe the walls down completely dry with clean, dry wipers.

## Cleaning Procedure 2

If liberal amounts of water cannot be used, an alternative procedure may be employed.

1. Soak a clean wiper in the cleaning solution. Wring it out so it is wet enough to dampen the surface, but dry enough so that the solution will not run down the wall.
2. Allow the solution to remain on the surface for two or three minutes. Remove excess lumps of mortar with the soft scraping device and repeat Step #1.
3. Wipe the wall completely dry with clean, dry wipers.

Note: To remove mortar smears that have been allowed to harden on the wall and cannot be removed by following the procedures listed above, a solution of Burnished Custom Masonry Cleaner by PROSOCO may be used with a dilution ratio of 1 part cleaner to 3 parts clean water, strictly following manufacturer's instructions.

**WARNING!** Never use muriatic acid solutions on Verastone or Verastone Plus units.

## Final Cleandown

Clean the completed walls with a detergent masonry cleaner strictly following the manufacturer's instructions including thorough rinsing. Do not use acid or abrasives on the block surfaces. For stubborn mortar stains or smears, a 3:1 solution of Burnished Custom Masonry Cleaner by PROSOCO may be used as long as the walls are thoroughly wetted with clean water before applying the cleaning solution and thoroughly rinsed with clean water immediately after washing. Failure to strictly follow manufacturer's instructions can result in permanent damage to the finished faces.

**DO NOT POWERWASH .**



architectural masonry units

Cleaning  
Verastone®  
Verastone® Plus

### Maintenance

Verastone and Verastone Plus units, properly installed and cleaned, need virtually no maintenance other than routine cleaning with standard commercial grade cleaning agents such as PINESOL® or FANTASTIK®. Graffiti, paint or dye may need special cleaning methods and products such as Trenwyth Graffiti Wizard® environmentally friendly cleaner. Contact manufacturer for specific cleaning recommendations. **DO NOT POWERWASH.**

### Field Coat Application

For required field coat application instructions, see Pages VS 13–14.

### Graffiti Removal Recommendation

Graffiti Wizard environmentally friendly cleaner removes most paints and permanent markers, varnish, glue, crayon, oil, grease, food spills, etc. from Verastone Plus surfaces. Apply Graffiti Wizard using a brush or cloth. Let stand 10 second to 20 minutes, depending on the severity of the stain. If using on a more porous or textured surface, a non-metallic stiff bristle brush may be required. Wipe the surface with a damp cloth. After the stain is removed, neutralize the surface with water making sure that all of the Graffiti Wizard is removed from the surface. Graffiti Wizard is available in 4-oz., 12-oz., 1 gallon and 5 gallon containers. To order, call (800) 233-1924. Always follow manufacturer's safety precautions. (See Graffiti Wizard® literature, TR2810, behind General Information tab.)

For completely finished walls, a finish coat of proprietary TRENDCOAT® acrylic (minimum 20% solids content) or TRENDCOAT® WB (water-based) is recommended. Apply to all Verastone and Verastone Plus walls after cleandown and when the walls are completely dry. Apply the acrylic evenly to cover the entire surface without forming drips or runs. For maximum coverage and best appearance, apply TRENDCOAT or TRENDCOAT WB with airless spray equipment.

TRENDCOAT clear, high-solids acrylic offers excellent graffiti resistance, provides moisture resistance and helps to cover any scuffs or scratches that may occur during handling and/or installation.

TRENDCOAT WB (water-based) may be used in lieu of TRENDCOAT. Some interior applications may require a water-based coating material only. TRENDCOAT WB provides the same benefits as TRENDCOAT but may not provide the rich gloss achieved by using TRENDCOAT.

Always produce a sample area of the TRENDCOAT or TRENDCOAT WB finish for architect/owner approval prior to applying the finish coat to the entire surface.

### Product Description

High-solids TRENDCOAT and water-based TRENDCOAT WB are high quality, non-yellowing sealers specifically formulated for field coating Verastone and Verastone Plus masonry units. The sealers offer outstanding durability that beautifies the natural color of the Verastone and Verastone Plus ground and polished surfaces.

### Advantage

TRENDCOAT and TRENDCOAT WB provide maximum protection from the damaging effects of air pollution, sun and extreme weather conditions. It covers and seals scuffs, scratches and small chips that may occur in the Verastone and Verastone Plus surface during installation and seals the faces and the joints. Because it is the same basic coating material which is used in the factory, it is completely compatible with the Verastone and Verastone Plus finishes.

### Application

Apply TRENDCOAT or TRENDCOAT WB to all Verastone and Verastone Plus walls after cleandown. TRENDCOAT and TRENDCOAT WB are ready to use and requires no mixing or dilution. Apply TRENDCOAT to **clean, dry walls** when the temperature is above 55° F. It should not be applied at temperatures lower than 55° F. All washdown activities for removal of mortar paste must be completed. TRENDCOAT and TRENDCOAT WB are sprayable with an airless sprayer or it can be applied using a brush, roller or long nap applicator. TRENDCOAT and TRENDCOAT WB shall be applied evenly to cover the entire surface without forming drips or runs.

- Keep container tightly closed when not in use.
- New mortar or adjacent concrete must cure for a minimum of 7 days before application.
- The best results are obtained using airless spray paint equipment. The surface must be completely covered to seal out water.
- Clean tools with Xylene immediately after use.

### Application Precaution

**TRENDCOAT is flammable.** Use only in well-ventilated or open areas. Keep away from extreme heat or open flame. Avoid breathing vapors, prolonged and repeated contact with skin and contact with eyes.



architectural masonry units

# Field Coat Application

## Verastone®

## Verastone® Plus

### Technical Information

#### TRENDCOAT® :

**Coverage:** 265 sq ft/gal @ 1.0 dry mil. Suggested mils applied should not exceed 5.0 wet mils to achieve block protection and cosmetics.

**Flash Point:** 3° F

**Normal Cure Time:** @ 70° F – 50% RH:  
10 minutes

**Solids Content:** 16.5%

**Weight solids:** 20%

**VOC:** 357.88 grams/liter solids

**Environmentally compliant in most states.**

**Low HAPS:** below 1%

**Weight per Gallon:** 7.49 lbs./gal

**Gloss:** Full

#### TRENDCOAT® WB:

**Coverage:** 563 sq ft/gal @ 1.0 dry mil. Suggested mils applied should not exceed 5.0 wet mils to achieve block protection and cosmetics.

**Flash Point:** 212° F

**Normal Cure Time:** @ 5-7 days for complete cure.  
Dry to the touch in 10 to 15 minutes.

**Solids Content:** 35%

**Weight solids:** 38%

#### **VOC:**

151.85 grams/liter (minus water)

175.54 grams/liter (solids)

**Environmentally compliant in most states.**

**HAPS-free**

**Weight per Gallon:** 8.71 lbs./gal

**Gloss:** Full

**Flammability:** TRENDCOAT WB is not flammable.

## Shapes and Sizes Coding System

All units are nominal 8" and 16" lengths unless modified by symbols as noted below. In some instances, only the first two (2) symbols will be used. Other symbols are added as required.

The coding system is based on a series of symbols that define the size, general type and variance from standard length and return.

1. The 1st part is the number denoting the **nominal thickness:**

1", 2", 4", 6", 8", 10" and 12"

2. The 2nd part is the letter or combination of letters denoting the general **type of unit.**

F = 1 Face Ground

FF = 2 Faces Ground

E = End Ground

EE = 2 Ends Ground

V = Vertical Score

H = Horizontal Score

BN = Bull Nose

T = Top Ground

B = Bottom Ground

C = Chamfer Ground

U = Bond Beam (specify open or solid bottom)

3. The **3rd part** is a number denoting length of the unit varying from the standard 16" length.

Example: 4FE8 is a 4" thick face and end ground unit that is 8" long.

4. The **4th part** is a letter denoting the hand of the appropriate return unit.

R = Right Hand    L = Left Hand

5. SPECIAL NOTE: For unit heights varying from the nominal 8", the numeral denoting height immediately follows the numeral denoting thickness.

Example: 64FE6BN is a nominal 6" thick, 4" high face ground, end ground, bullnose unit.

6. DA# denotes the **scoring pattern.** (See Page VS 17)



architectural masonry units

# Shapes & Sizes

## Verastone®

## Verastone® Plus

Note: Not all sizes are shown in this brochure. Please consult your nearest manufacturing facility.

Metric shapes and sizes are available.

<p><b>2F</b></p> <p>15 5/8" x 7 5/8" x 1 9/16"</p>	<p><b>4FT</b></p> <p>15 5/8" x 7 9/16" x 3 9/16"</p>	<p><b>4FE</b></p> <p>15 9/16" x 7 5/8" x 3 9/16"</p> <p>Also available in 6, 8, 10 &amp; 12" thicknesses.</p>	<p><b>4F</b></p> <p>15 5/8" x 7 5/8" x 3 9/16"</p> <p>Available in hollow, semi-solid or solid units.</p>	<p><b>6F</b></p> <p>15 5/8" x 7 5/8" x 5 9/16"</p>	<p><b>8F</b></p> <p>15 5/8" x 7 5/8" x 7 9/16"</p>
<p><b>8FE</b></p> <p>15 9/16" x 7 5/8" x 7 9/16"</p> <p>Also available in 4, 6, 10 &amp; 12" thicknesses.</p>	<p><b>8FEBN</b></p> <p>15 9/16" x 7 5/8" x 7 9/16"</p>	<p><b>10F</b></p> <p>15 5/8" x 7 5/8" x 9 9/16"</p> <p>Also available in 12" thickness.</p>	<p><b>44F</b></p> <p>15 5/8" x 3 5/8" x 3 9/16"</p> <p>Also available in 2, 6, 8, 10 &amp; 12" thicknesses.</p>	<p><b>8FT</b></p> <p>15 5/8" x 7 9/16" x 7 9/16"</p>	<p><b>8FETR*</b></p> <p>15 9/16" x 7 9/16" x 7 9/16"</p> <p>Also available in 2, 4 &amp; 6" thicknesses. *Specify right or left (right shown)</p>
<p><b>8FTBN</b></p> <p>15 5/8" x 7 9/16" x 7 9/16"</p>	<p><b>4 FE 135°</b></p> <p>11 9/16" x 7 5/8" x 3 9/16"</p> <p>Also available in 8" thickness.</p>	<p><b>4 FE L CORNER</b></p> <p>15 9/16" x 7 5/8" x 3 9/16"</p>	<p><b>8UF (v-block)</b></p> <p>15 5/8" x 7 5/8" x 7 9/16"</p>	<p><b>code designations</b></p> <ul style="list-style-type: none"> <li>F = 1 Face Ground</li> <li>FF = 2 Faces Ground</li> <li>E = End Ground</li> <li>EE = 2 Ends Ground</li> <li>V = Vertical Score</li> <li>H = Horizontal Score</li> <li>BN = Bull Nose</li> <li>T = Top Ground</li> <li>B = Bottom Ground</li> <li>C = Chamfer Ground</li> <li>U = Bond Beam</li> </ul> <p>All Trenwyth concrete masonry units are manufactured with an integral moisture resistant admixture to repel moisture and prevent mold and efflorescence.</p>	
<p><b>8F8 Solid</b></p> <p>7 5/8" x 7 5/8" x 7 9/16"</p> <p>Also available in 2, 4, 6, 10 &amp; 12" thicknesses.</p>	<p><b>8F8 Hollow</b></p> <p>7 5/8" x 7 5/8" x 7 9/16"</p>	<p><b>KOBB (Open Bottom)</b></p> <p>15 5/8" x 7 5/8" x 7 9/16"</p> <p>Also available in 6, 10 &amp; 12" thicknesses.</p>	<p><b>FHA (KOBB with Solid Bottom)</b></p> <p>15 5/8" x 7 5/8" x 7 9/16"</p> <p>Also available in 6, 10 &amp; 12" thicknesses.</p>		

Chamfered corners minimize chipping and eliminate sharp corners. Not all chamfer designations are shown. Any side can be chamfered.

**Chamfers**

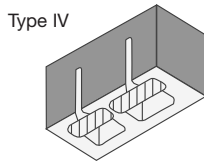
<p><b>8FE C1</b></p>	<p><b>8FT C2</b></p>	<p><b>8FET C4</b></p>	<p><b>8FFE C5</b></p>	<p><b>8FEE C11</b></p>
----------------------	----------------------	-----------------------	-----------------------	------------------------

\*Specify right or left (right shown)

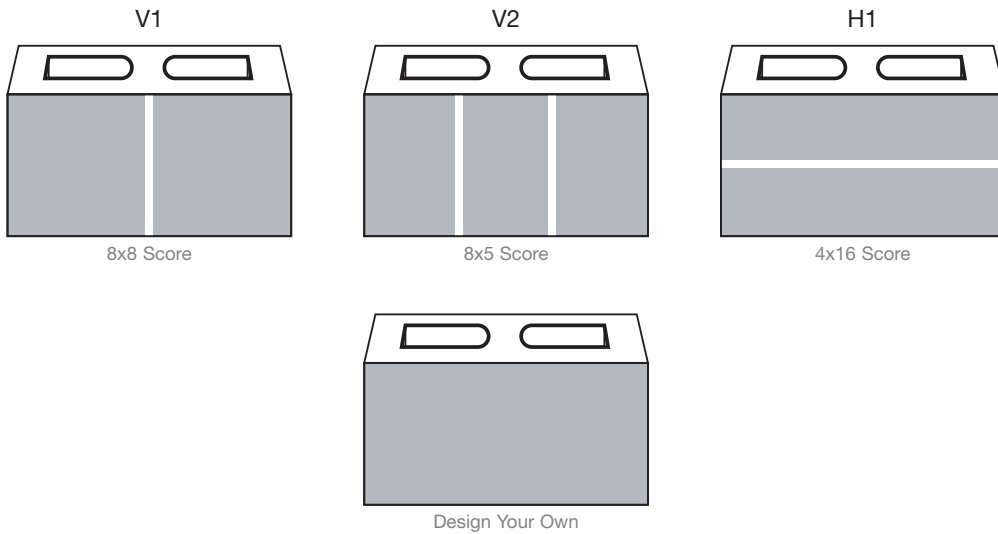
### Verastone®/Acousta-Wal® units

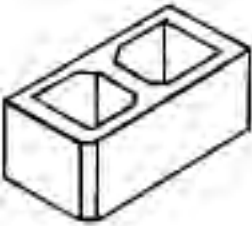
Control noise pollution in your project with Verastone®/Acousta-Wal® units.

For more information refer to the Acousta-Wal® section.

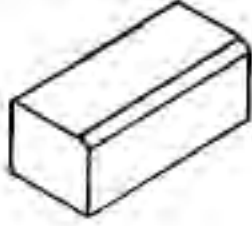


- **Score Dimensions.** The width of the score is 3/8".
- **Tuckpoint and scored joints.** All scored joints must be tuckpointed to prevent moisture penetration and to match the real joints between the blocks. This gives a more realistic, pleasing appearance to the finished wall.
- **Special scoring.** Written dimensions and a sketch are required in order to produce special scoring. Limitations: No more than five (5) vertical scores or two (2) horizontal scores are acceptable on the face of a block. **DO NOT USE RAKE JOINTS.**

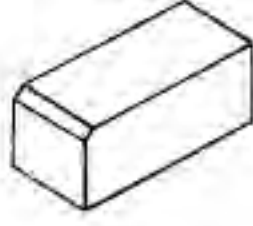




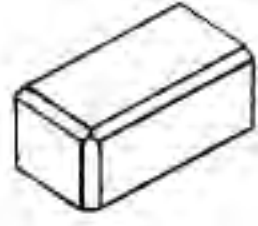
C1



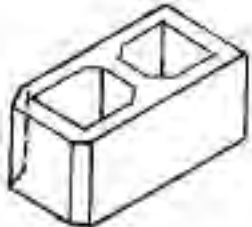
C2



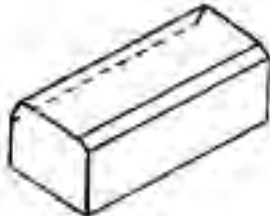
C3



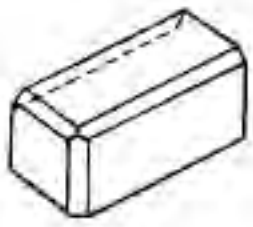
C4\*



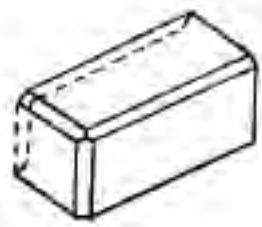
C5



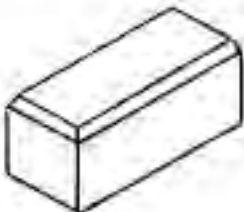
C6



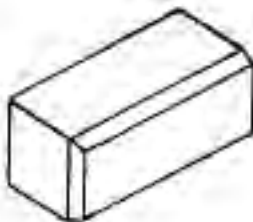
C7



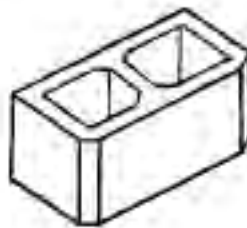
C8



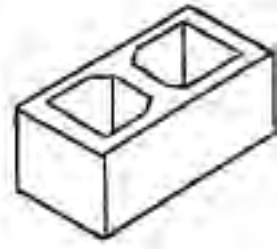
C9\*



C10\*



C11



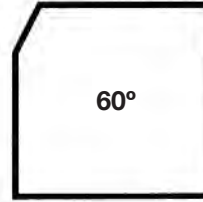
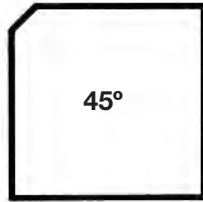
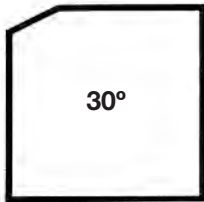
Design your own

Notes:

- 1) \*For these units designate left L (left) or R (right). (Right shown)
- 2) Show Faces to be ground as: F (face), E (end), T (top), B (bottom).
- 3) If you need a configuration not shown simply mark up one of the "Design your own" above and fax it to us at PA (717) 767-4023, IL (815) 416-0382 or AZ (623) 435-2088. The chamfer designation will be CS (Chamfer Special).
- 4) A standard chamfer is 1" at a 45° angle. Please clearly designate any variations.

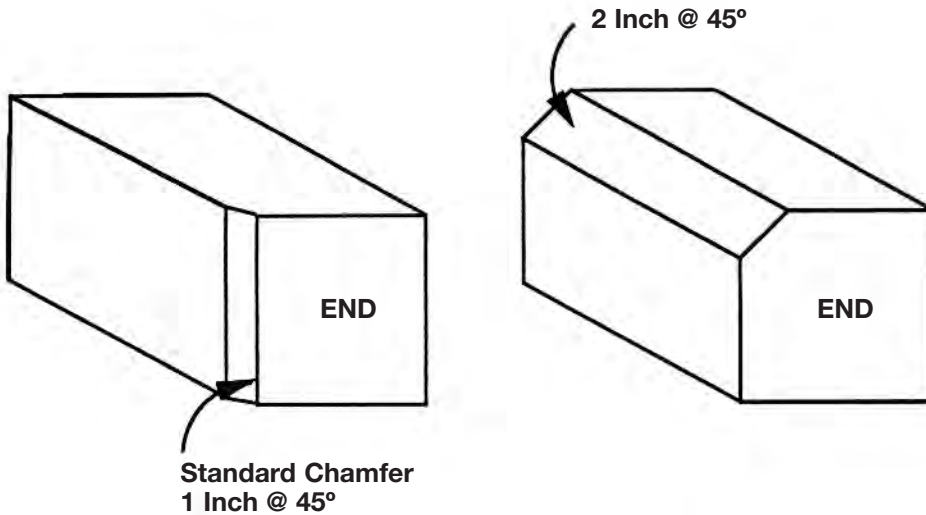
When chamfered edges are required, the following variations are available. Any angles of 30°, 45° or 60° may be supplied on any of the edges of Verastone or Verastone Plus units.

See details below:

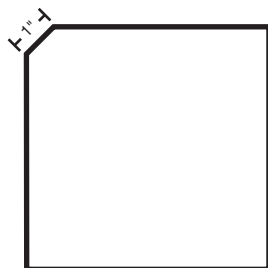


These three standard angles may be used on any size block and the width of the chamfer may be varied. Typically chamfers are 1", 2", 3" or 4" wide.

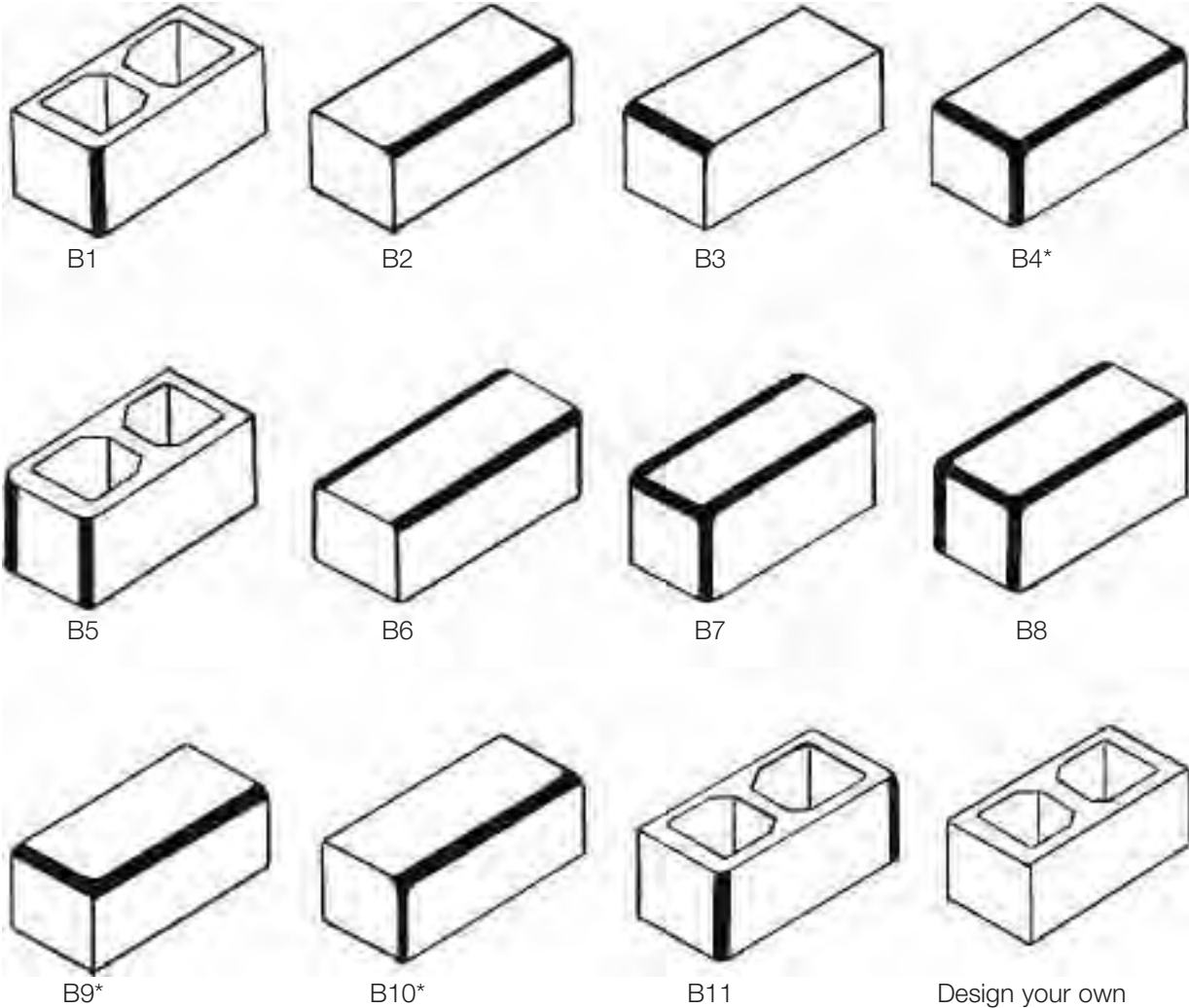
Any or all edges may be chamfered.



Standard Chamfer



**Always Designate size of chamfer when ordering.**



Notes:

- 1) \*For these units designate left L (left) or R (right). (Right shown)
- 2) Show Faces to be ground as: F (face), E (end), T (top), B (bottom).
- 3) If you need a configuration not shown, simply mark up one of the "Design your own" above and fax it to us at PA (717) 767-4023, IL (815) 416-0382 or AZ (623) 435-2088. The bullnose designation will be BNS (Bullnose Special).
- 4) You may be required to produce architectural drawings prior to production. All drawings for special units require approve with authorized signatures.



architectural masonry units

## Frequently Asked Questions

Verastone®  
Verastone® Plus

### 1. **How is the product made? What is the difference between Verastone and Verastone Plus?**

Verastone recycled ground face masonry units are integrally colored concrete blocks with one or more faces ground to expose the variegated colors of the natural aggregates. A special additive is included in the concrete mix design to prevent efflorescence. A factory-applied, clear satin gloss acrylic accentuates and highlights each burnished face and provides moisture resistance.

Verastone Plus recycled filled and polished masonry units offer a smooth terrazzo look on one or more of the faces. After the initial grinding process to expose the variegated colors of the natural aggregates, the pores and interstices are filled with a cementitious grout. The exposed faces are then polished smooth in a multi-stage polishing process and a factory-applied clear satin gloss acrylic or water-based sealer is applied to accentuate the natural beauty of the aggregates and provide moisture resistance.

Verastone and Verastone Plus both contain a significant amount of recycled content that may earn LEED® points for your building.

### 2. **Is the color on the surface or all through the block?**

The color is integral, i.e. it is uniform throughout the concrete block.

### 3. **Why is the color different depending on which plant makes the blocks?**

The aggregates used to make the blocks at each plant come from different sources and are, therefore, of different colors and particle shapes. This changes the color and appearance of the finished product.

### 4. **How can I be sure it will not be chipped and scuffed in shipment and jobsite handling?**

Trenwyth products are manufactured, packaged and shipped with great care to protect the finished surfaces. The units are placed on sturdy wooden pallets and a layer of heavy cardboard is placed between each layer of blocks. The entire cube is then covered with a heavy gauge plastic bag and strapped with steel banding. Verastone and Verastone Plus units should be handled as finished material on the jobsite to avoid scuffing, chipping or other damage.

### 5. **Can I grind these blocks at the jobsite?**

No. Precision equipment is needed to grind and polish Verastone and Verastone Plus units and this can only be done satisfactorily in the factory.

### 6. **Can any mason install this product?**

Any mason can install this product. Masons experienced in laying architectural blocks who are good craftsmen can lay ground face blocks very well. Unfortunately, no matter how well our blocks are manufactured, if they are not laid well, the appearance of the project is diminished.

### 7. **What is the difference between lightweight, medium-weight and normal-weight blocks?**

ASTM C90 specification for load-bearing concrete masonry units defines lightweight as concrete less than 105 lbs per cu. ft., mediumweight as concrete between 105 and 125 lbs per cu. ft. and normalweight as concrete of 125 lbs per cu. ft. or more.

The aggregate used to make lightweight blocks is usually expanded shale, expanded clay, pumice or some similar type of open-cell material. By its nature such aggregate is porous and will allow some moisture penetration. ASTM C90 sets the maximum rate of absorption at 18 lbs per cu. ft. for lightweight, 15 lbs per cu. ft. for mediumweight and 13 lbs per cu. ft. for normalweight. Most Verastone and Verastone Plus units are medium-weight.



**8. What is the surface coating?**

A clear high solids acrylic coating (TRENDCOAT) or a water-based coating (TRENDCOAT WB) is applied in the factory after the blocks are ground and polished. It is completely light stable and will not deteriorate with exterior exposure and weathering.

**9. Why do you recommend walls have a field coat? Is the field coating necessary?**

The factory-applied coating is designed primarily to protect the Verastone and Verastone Plus surface during shipment and installation. The field coat covers and enhances the entire wall including the mortar joints and it hides most scuffs, scratches and nicks that occur during handling and installation. We recommend field coating because it puts the finishing touch to the installation and brings out the full beauty of Verastone and Verastone Plus units.

**10. What is the life expectancy of the product?**

50 years plus — if the building is properly designed and the Verastone and Verastone Plus units are installed correctly.

**11. At what temperature should the TRENDCOAT® and TRENDCOAT WB field coating be applied or not applied?**

The TRENDCOAT® and TRENDCOAT WB coating should be applied to dry walls when the temperature is above 55° F. It should not be applied at temperatures lower than 55° F.

**12. Will the TRENDCOAT® or TRENDCOAT WB coating peel, fade, crack or spall?**

TRENDCOAT® and TRENDCOAT WB are high-quality sealers and will not peel, fade, crack or spall when properly applied to a dry surface. However, if the walls are not properly designed or constructed with appropriate flashing, weeps, vents, etc., and the substrate block is continuously saturated behind the acrylic, deterioration may occur over time.

**13. Can you control the color consistency?**

Great care is taken in the Verastone and Verastone Plus manufacturing processes to ensure a high degree of color consistency. This includes checking incoming raw materials, use of computer controlled precision automatic color injection equipment, and precise control of the moisture and curing process. As with any natural product, there are minor color variations from block to block. Final inspection includes dry stacking samples drawn from the production line every half hour and comparing those samples to the master sample for that project. Always request a jobsite field panel to be erected to show the expected unit and mortar color.

**14. Can you match colors?**

Yes, within the limitations of the aggregates available at each of our plants.

**15. If I want to put on an addition a year or more after the original installation of Verastone blocks, will the new Verastone blocks match the old?**

We can usually match previously manufactured colors quite well. However, we recommend that, if possible, a small piece be cut or chipped from the existing wall and sent to us. If that is not possible, a new sample of the color should be visually compared to the existing wall and adjustments made to the color if necessary. Aggregates are a product of "Mother Nature", however, and can vary over time. Always order a current full size sample to verify color.



architectural masonry units

## Frequently Asked Questions

Verastone®  
Verastone® Plus

**16. What special precautions should be taken in the handling, storage and installation of the product?**

Refer to the Verastone and Verastone Plus Installation & Cleaning sections behind this tab.

**17. Can Verastone and Verastone Plus units be used in flooring or paving?**

No. Verastone and Verastone Plus units are designed as wall material and are not suitable for flooring or paving.

**18. How does one patch this product? Can chips in the wall be repaired?**

Damaged or chipped units that do not meet requirements of ASTM C90 for the block should not be installed. If units incur damage during installation or by other trades, a patch kit can be ordered from manufacturer. Follow manufacturer's instructions for best results.

**19. Why should I pay a premium for Verastone and Verastone Plus units when there are so many other less expensive ground face blocks, split-face blocks or bricks?**

Verastone and Verastone Plus units are the highest quality recycled ground face or burnished blocks available. If quality and service are important to you -- you should specify and use Verastone and Verastone Plus units.

**20. What special shapes are available? Can you provide bullnose corners? Are they available in larger sizes?**

A large assortment of special shapes are available or can be made. We have numerous molds, jigs, etc. -- the most in the industry. Give us a drawing or sketch of the special shapes you would like and let us show you what we can do. We offer a chamfered corner as well as a bullnose. A full range of over-sized units are also available. See the Monumental tab in this binder.

**21. What do I use for the washdown to remove mortar and scum?**

Refer to the Verastone and Verastone Plus Installation & Cleaning sections behind this tab.

**22. What happens if acid is used on Verastone and Verastone Plus blocks?**

Cleaners that use a harsh acid (like HCL) as a base can attack the acrylic sealer, degrading the coating and etch the pigment in the blocks. Use only the recommended cleaner on Trenwyth products.

**23. Are the blocks UL rated?**

Verastone and Verastone Plus blocks are tested annually to Underwriter Laboratories (UL) standards by various independent testing laboratories. Therefore, they are UL rated although they are not UL listed, as there is no requirement that ground face blocks be UL listed in the United States.

**24. Can I return blocks I do not use?**

No. All Verastone and Verastone Plus blocks are custom made. We require a signed sales contract before we will start manufacturing any order. Since we don't make any blocks for stock, any Verastone and Verastone Plus blocks that are ordered in excess must be shipped and cannot be returned.

**25. Is the score cast or cut?**

The score is cut into the finished side of Verastone and Verastone Plus blocks.



architectural masonry units

## Frequently Asked Questions

Verastone®

Verastone® Plus

**26. Can I get the back side of the exposed, unfinished block scored to match the score on the finished face?**

Yes.

**27. Do I tuckpoint the scored joint?**

The scored joints must be tuckpointed to match the rest of the mortar joints. If they are not tuckpointed, the continuity between the scored joint and the mortar joint is lost. Rake joints are not permitted on Verastone or Verastone Plus.

**28. Is there any special mortar required?**

Colored mortar that matches or complements the Verastone and Verastone Plus colors can create a beautiful effect. For more information on mortars see Mortars in the General Information section of this binder or call your Trenwyth manufacturing facility and ask for a Trenwyth Mortar Kit. A Trenwyth-approved integral water repellent admixture is recommended for all exterior mortar.

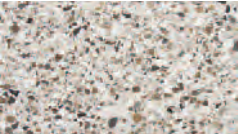


architectural masonry units

Colors  
Verastone®  
Verastone® Plus

### Eastern Selection

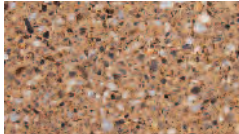
Note: All color samples are intended to be representative only. For accurate color selection, always request a full size sample.



Chablis  
Group C



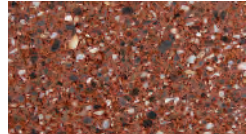
Vintage  
Group C



Palomino  
Group C



Rhine Grey  
Group C



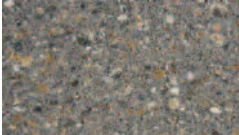
Chianti  
Group C

### Midwest Selection

Note: All color samples are intended to be representative only. For accurate color selection, always request a full size sample.



Chardonnay  
Group C



Superior  
Group C



Austin  
Group C



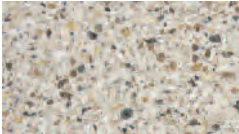
Toffee  
Group C



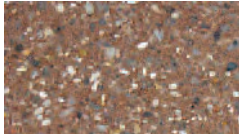
Old Country  
Group C



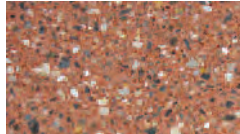
Cambria  
Group C



Fossil Reef  
Group C

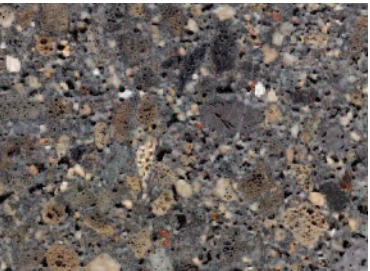


Cabernet  
Group C

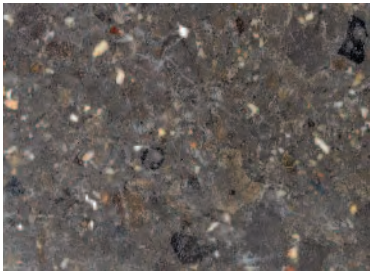


Schiraz  
Group C

Verastone® Plus recycled filled and polished masonry units offer the look of a smooth terrazzo finish in the Verastone® recycled ground face masonry unit color line. Discover the difference:



Verastone® recycled  
ground face finish



Verastone® Plus recycled  
filled and polished  
masonry units finish